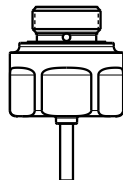
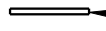
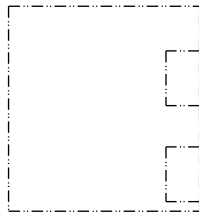
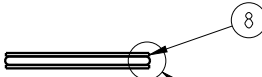
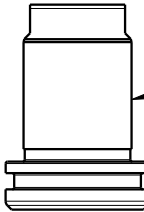
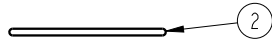
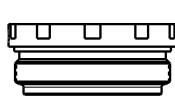
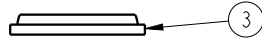


NO.	QTY	DESCRIPTION	MODEL NUMBER				STANDARD SEAL KIT	FKM SEAL KIT
			42-1120-05-US	42-1120-06-US	42-1120-09-US	42-1120-07-US		
1	1	SENSOR, ULTRASONIC, M12, 1m	29740200	29740200	29740200	29740200		
2	1	O-RING, (-029)	39001013	39001013	39001013	39001013	X	39012014
3	1	WIPER, SNAP-IN, (1-1/8)	39050020	39050020	39050020	39050020	X	X
4	1	SEAL, LL, (1-1/8X1/8X1/8X1-3/8)	39011048	39011048	39011048	39011048	X	39012007
5	1	O-RING, (-011)	39050042	39050042	39050042	39050042	X	39051025
6	1	PISTON, CYL, 8800, US	82011014	82011011	82011012	82011013		
7	1	GLAND, CYL, 8800 & 39.9 KN	82031002	82031002	82031002	82031002		
8	1	SEAL, T, (1-5/16 X 5/32 X 1-1/2)	39H10017	39H10017	39H10017	39H10017	X	39V11031
9	1	SENSOR, FACE SEAL	43000040	43000040	43000040	43000040		
	1	SENSOR, FACE SEAL, FKM	43000041	43000041	43000041	43000041		
N/A	N/A	SEAL KIT, STANDARD	60210201	60210201	60210201	60210201	NOTED	
N/A	N/A	SEAL KIT, FKM	6V210201	6V210201	6V210201	6V210201		NOTED

B

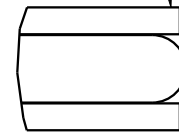
B



7 TORQUE TO 55 FT-LBS/74.6 Nm  
USING VEKTEK TORQUE  
TOOL AT200151

4 LIPS DOWN

3 PIECE SEAL  
ASSEMBLE WITH T-SEAL  
BETWEEN BACKUP RINGS



DETAIL A  
SCALE 4.000

SEE DETAIL A

BODY NOT A REPLACEMENT PART



Lubricate all seals with  
clean hydraulic fluid prior  
to assembly.

9 FACE SEAL

1 TORQUE TO  
45 FT-LB/61 Nm

### PARTS LIST



VEKTEK, INC.  
1334 E. SIXTH AVE. P.O. BOX 625  
EMPORIA, KS. 66801 U.S.A.

ASSEMBLIES AFFECTED  
42112005US, 42112006US,  
42112009US, 42112007US

PARTS LIST, ASSY, CYL, 88, MM, 39.9KN, 12, SSTRK, DA, US

SIZE  
A

MPLV2102

REV  
A

SHEET 1 OF 2

A	5660	RELEASE	ALS	3/24/25
REV	IN ACCORDANCE WITH ECN	EFFECTIVE DATE	REVISED BY	DATE
DRW BY: ALS	<b>DRAWING STATUS: Released</b>			
DATE: 3/21/25	PRODUCTION APPROVED FOR RELEASED STATUS ONLY			


1

2

FORM FEG035\_PL\_ASIZE, REV. B

1				↓	2			
B					B			
←					←			
A					A			
					↑			

				<b>PARTS LIST</b>		 <small>VEKTEK, INC.          1334 E. SIXTH AVE. P.O. BOX 625          EMPORIA, KS. 66801 U.S.A.</small>		
A	5660	RELEASE	ALS	3/24/25	ASSEMBLIES AFFECTED 42112005US	PARTS LIST, ASSY, CYL, BB, MM, 39.9KN, 12.5STRK, DA, US		
REV	IN ACCORDANCE WITH ECN	EFFECTIVE DATE	REVISED BY	DATE		ASSY, CYL, BB, MM, 8800, .5 STRK, DA, US		
DRW BY: ALS		<b>DRAWING STATUS: Released</b> PRODUCTION APPROVED FOR RELEASED STATUS ONLY				SIZE	MPLV2102	REV
DATE: 3/21/25						A	A	
1					2			